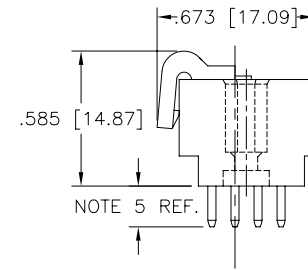
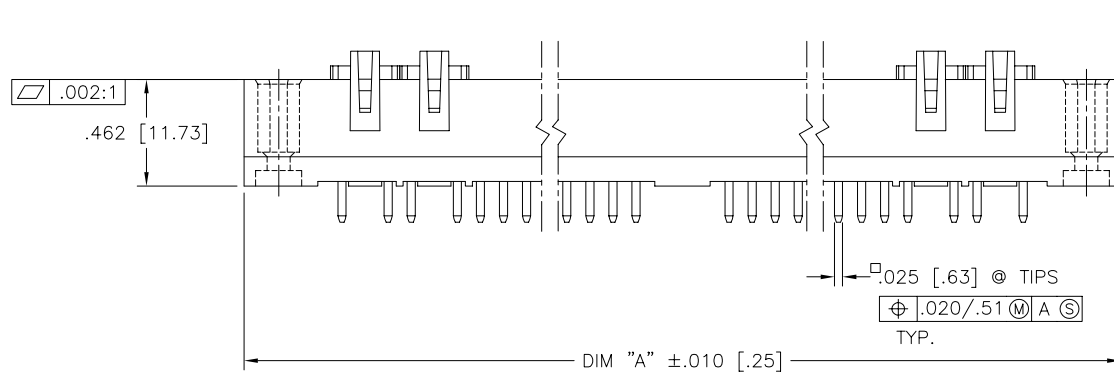
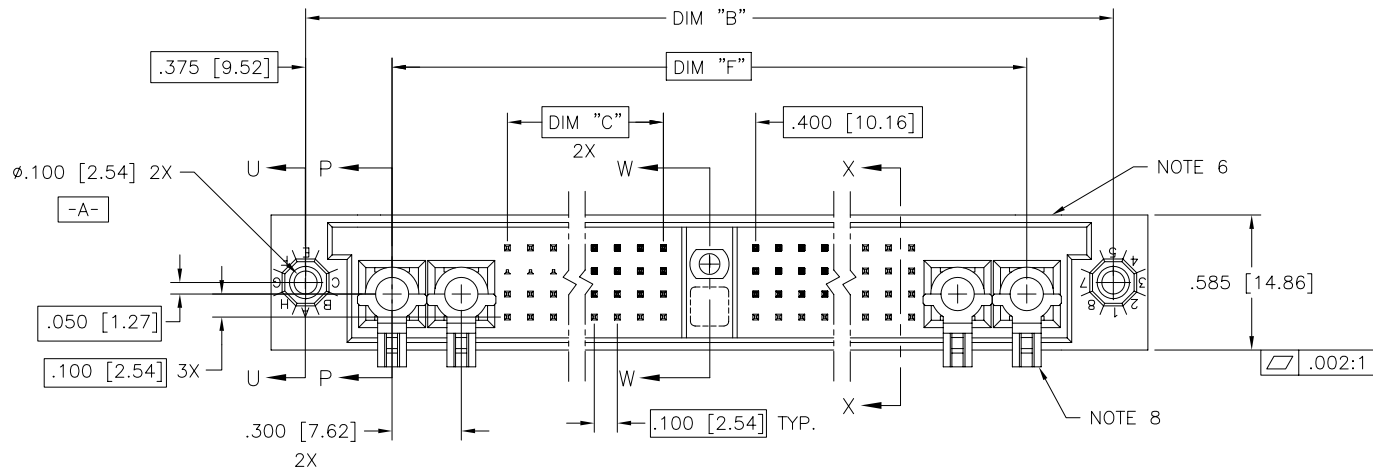
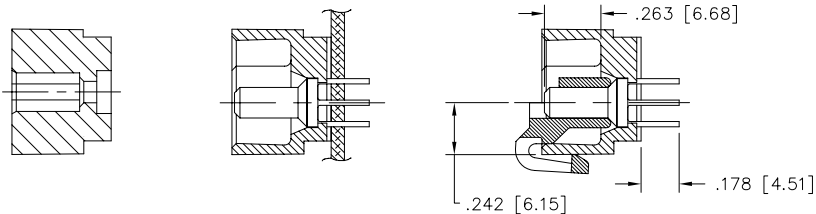


PRODUCT NUMBER
SEE NOTE 1



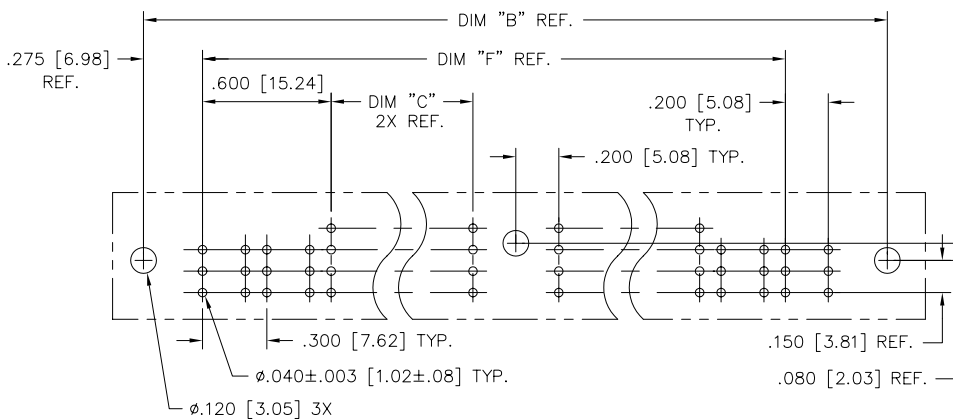
mat'l. code NOTE 3		surface ISO 1302 ✓		tolerance ISO 406 ISO 1101		projection INCH/MM		product family HPC	
itr		ecn no dr		date		tolerances unless otherwise specified		title	
A	V22185	RDS	5/11/92	angles	linear	.xx±.01/.3	INCH/MM	4 ROW VERTICAL HEADER	
B	V40263	PDP	1/14/94			.xxx±.005/.13		SOLDER TAIL, 1 G.P., 4 P.P.	
C	V41237	GAH	8/17/94	0'±2'		.xxx±.0020/.05	scale 1:1	dwg no	
D	V91070	HTB	5/17/99	dr	D.SHEAFFER	5/4/92		sheet 1 of 2 size	
E	V00274	JWS	2/2/00	engr	S.CLARK	5/11/92		50541 A3	
F	M06-0260	MHT	7/07/06	chr	S.CLARK	5/11/92		type Product Customer Drawing	
sheet index		revision sheet		F	F				
				1	2				

PRODUCT NUMBER	DIM.	LENGTH FORMULAS
SEE NOTE 1	DIM "A"	.100/2.54 x NO. OF COLUMNS +2.25/57.2
	DIM "B"	.100/2.54 x NO. OF COLUMNS +1.950/49.53
	DIM "C"	.100/2.54 x NO. OF COLUMNS DIVIDED BY 2 -.100/2.54
	DIM "F"	.100/2.54 x NO. OF COLUMNS +1.200/30.48

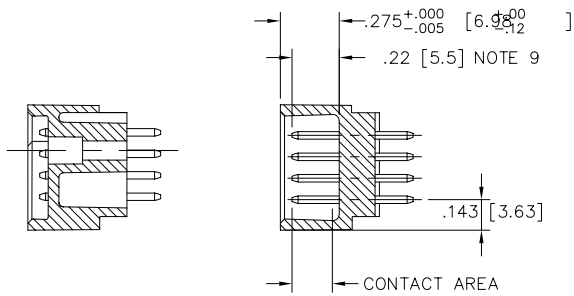


SECTION U-U
DETAIL P
(INSTALLED IN
PCB, NOTE 8)

SECTION P-P
(W/LOCATOR,
SEE DETAIL P)



RECOMMENDED PCB LAYOUT
(ALL HOLES LOCATED ON .100/2.54 GRID
UNLESS OTHERWISE SPECIFIED)



SECTION W-W
SECTION X-X

NOTES:

- PRODUCT NUMBERING CODE:
50541 - X YYY Z
TAIL LENGTH (NOTE 5)
NO. OF POSITIONS (NOTE 2)
PLATING (NOTE 4)
BASE NUMBER
- PRODUCT NUMBERING CODE FOR
SELECT LOAD PART NUMBERS:
50541 - XXXYY
SEQUENCE NUMBER
ALWAYS 'XX'
BASE NUMBER
- THIS PRODUCT IS CONFIGURED IN SIZES OF 20 thru 120
COLUMNS IN INCREMENTS OF TWO.
i.e.: 20,22,24,26,.....116,118,120.
- HOUSING MATERIAL: GLASS AND MINERAL FILLED
HIGH TEMP. THERMOPLASTIC. FLAME RETARDANT PER
UL94V-0. COLOR: BLACK.
PIN MATERIAL: PHOS BRONZE
- PLATING CONTACT AREA OPTIONS:
A = 50u" Ni UNDER ALL WITH 30u" Au ON CONTACT
AREA, SnPb ON PCB INTERFACE AND Au FLASH
ON ALL OTHER AREAS.
- TAIL LENGTH OPTIONS: (±.015/.38)
A = .177/4.5
J = .120/3.05
- MANUFACTURE'S NAME, PART NUMBER AND LOT CODE TO
APPEAR ON THIS SURFACE PER BUS-12-108.
- FOR DOCUMENTATION MENU, SEE BUS-01-057.
- POWER PIN LOCATOR (REF. 50234) TO BE REMOVED
AFTER SOLDERING.
- REFERENCE 50802 FOR F.M.L.B. OPTIONS AND WORKSHEET.

mat'l. code		surface ISO 1302 ✓	tolerance ISO 406 ISO 1101	projection ⊕	product family HPC
ltr	ecn	no	dr	date	tolerances unless otherwise specified
F					angles linear .XX±.01/.3 INCH/MM
					0'±2' .xxx±.005/.13 xxx±.0020/.05
			dr	D.SHEAFFER	5/4/92
			enrg	S.CLARK	5/11/92
			chr	S.CLARK	5/11/92
			appd	S.CLARK	5/11/92
sheet	revision				
index	sheet				
scale 1:1					title 4 ROW VERTICAL HEADER SOLDER TAIL, 1 G.P., 4 P.P.
FCJ					dwg no 50541
					sheet 2 of 2 size A3
					type Product Customer Drawing



Copyright FCI